



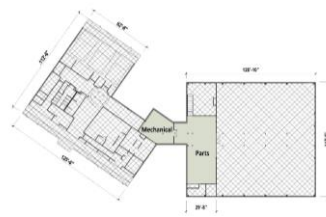
## Goose Creek Transportation Center Facility & Site Analysis

Goose Creek Consolidated Independent School District

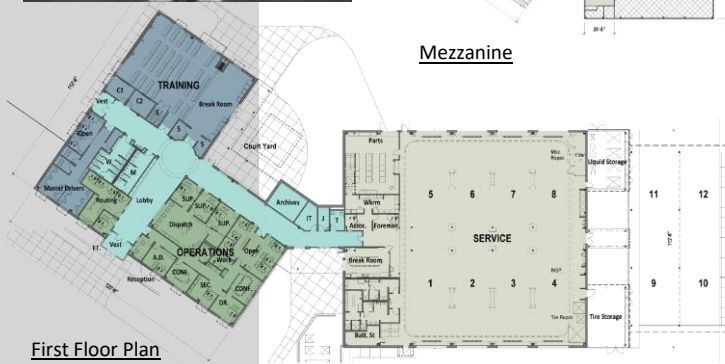
Baytown, Texas



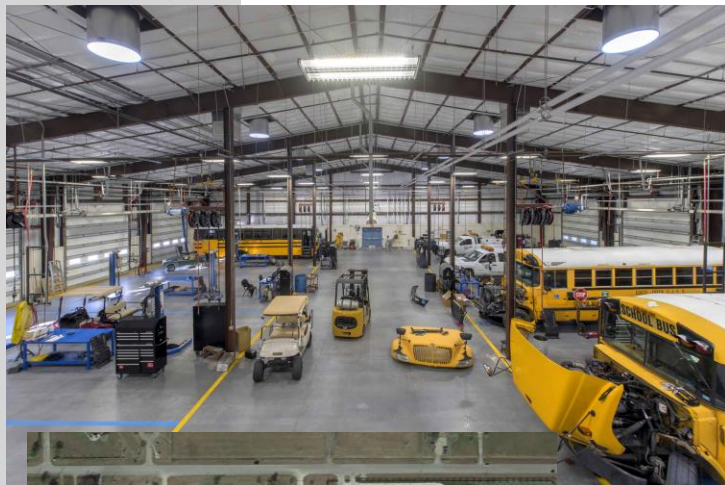
Before



Mezzanine



First Floor Plan



### COMPLETION DATE

Spring 2018

### COST OF CONSTRUCTION

\$12.9m

### CAPACITY

250 buses; 285 cars

### AREA OF BUILDING

32,000 ± sf (New)/40 acres

### REMARKS

This new building will house the entire transportation center with extra space for future growth and fully support the 3 main functions of the space: administration/operations, training/safety, and service.

The building is broken into two sections based on these functions and share a centralized mechanical system, thus creating a building that can easily expand if needed. Equipped with an administrative suite, open air training/break rooms with direct bus vehicle training, lots of storage, and secure vestibule/corridors this facility will serve its occupants on a basic level while giving them an extra gear that will help them to be more efficient. Three large training areas can be combined to offer GCCISD a much needed 300+ person training and presentation facility for the entire district to take advantage of. Utilizing inexpensive, durable materials in interesting ways and its service center, the building will speak "Transportation Center".

### SERVICES PROVIDED BY JMB2 ARCHITECTURE COOPERATIVE

Full architectural services including marketing materials and renderings, visioning, programming, concept and schematic design, design development, bidding, permitting, and construction administration.

### FIRM CONTACT

JMB2 Architecture, Inc. – J. Matthew Brown, AIA, REFP – 281.980.0900

### CLIENT CONTACT

GCCISD – Ray Brown, Sr. Project Inspector – 281.628.1812

### GENERAL CONTRACTOR CONTACT

Drymalla Construction Co. – Earl Pitchford, President – 979.732.7257

### PHOTOGRAPHER CONTACT

Guillermo Cabrera, AIA – 832.535.7401

